



WINNIPEG
AIRPORTS AUTHORITY

AIRPORT SITE REDEVELOPMENT PROGRAM

TAKING OFF

FALL/WINTER
2006

Message from the President

A vision is taking shape



Barry Rempel

With Airport Redevelopment construction moving dramatically ahead, we have experienced a remarkable demonstration of cooperation and pride from customers, stakeholders and the community. Our vision of leading transportation innovation and growth is taking

shape and our entire team is focused on managing Airport Redevelopment and daily operations in a manner which effectively serves our community today and into the future.

It is exciting to see the results of this busy construction period. We completed a new, permanent roadway which provides direct access to the existing terminal and Sheraton Four Points Hotel and have opened the first level of the new parkade, providing hundreds of economy rate covered parking stalls in time for the winter charter season. Level 2 will also become available to the public before the end of the year.

Communications with you continues to be a high priority for Winnipeg Airports Authority and is particularly important during this period of rapid change. Airport construction news is posted regularly on our website (www.waa.ca) and to enable a better understanding of Airport Redevelopment, we created a permanent display in the terminal building with design concepts and architectural model.

Our consultative approach throughout Airport Redevelopment continues to benefit from your input. Everyone in this community has a stake in Airport Redevelopment and this exciting journey is leading toward a very bright future.

Sincerely,

Barry Rempel

President & CEO

Winnipeg Airports Authority



Inside

New parkade opening	2
New roadway	3
Construction Photos	4 – 5
Architect's Model & Renderings	6
Quick Facts	7
Frequently Asked Questions	7
We Want To Hear From You	8



New parkade opening

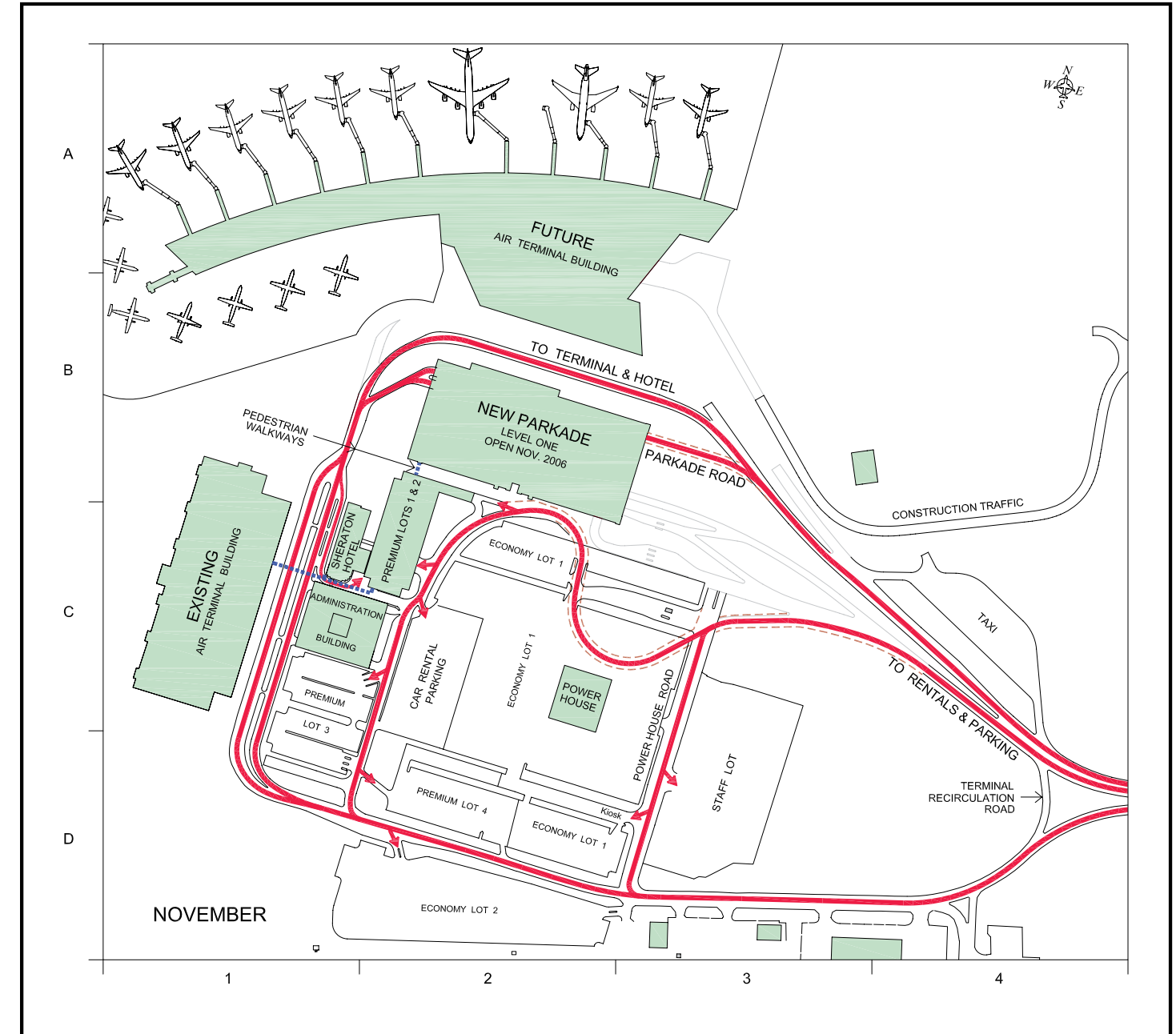


New parkade under construction, summer 2006.

With a footprint approximately two-thirds the size of the new airport terminal building, the new 4-level parkade has been a major construction project in its own right. More importantly, this parkade will provide a number of significant benefits to WAA customers. Covered parking spaces at economy rates will be made available to the public before the end of the year. Movement inside the building will be quick and efficient, through elevators and walkway ramps from deck to deck, which have been designed to accommodate customers in wheelchairs as well as those with rolling luggage.



Terminal approach road opens



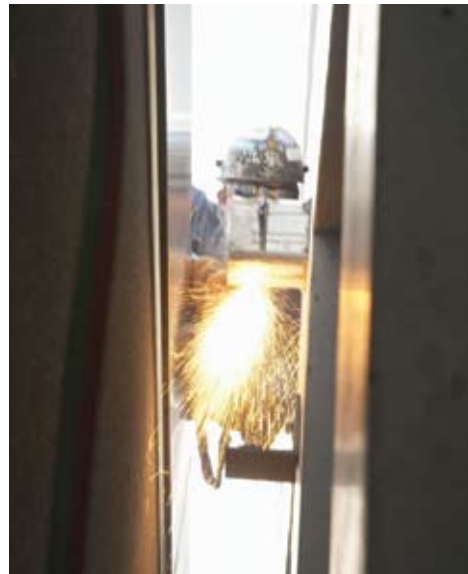
A new roadway system has been under construction during the 2006 summer/fall building season to serve the needs of customers using the new parkade and terminal facilities.

This includes a new road which opened in October, to provide customers with a permanent, convenient route for arriving at the terminal building and hotel.

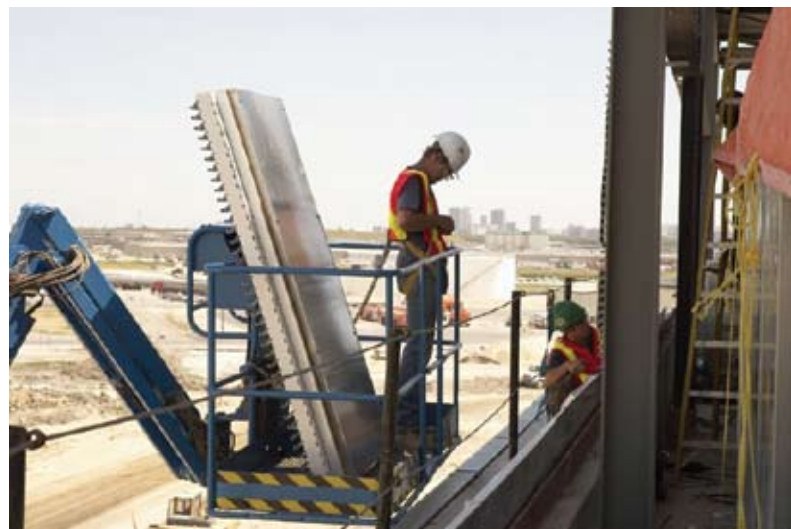
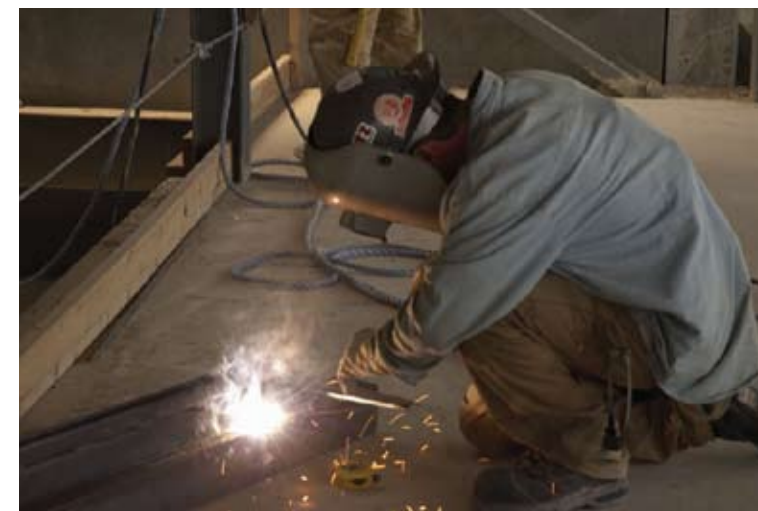




Parkade construction summer 2006



At an average rate of more than 10,000 person hours per week, site construction activity will likely surpass 300,000 total hours by the end of 2006. The following photo gallery documents some highlights from a busy summer construction season.





A view of tomorrow

Architectural designs and model are displayed on terminal 2nd level

A public display has been created on the terminal 2nd level to provide customers with a visual representation of Winnipeg's new airport campus. The wall display portion consists of a full colour mural, containing architectural renderings of parkade and terminal exteriors as well as particular areas within the terminal facility.

The architectural model portrays a total area of 300,000 square meters to exact scale. Spacious, luminescent and emphasizing customer service throughout, these design pieces are an exciting indication of what will become a "Spirited Energy" landmark for decades into the future.



The architectural model depicts all future airport campus components to exact scale.



Winnipeg visitors Candice Jaworski and Chris Hazel of Calgary enjoy architectural design concepts located in the terminal building, 2nd level.

Frequently asked questions

Following are answers to questions raised since the last publication of this newsletter.

Is current construction on schedule?

Yes. It has been an extremely productive process over the past several months, with roadways, parkade and other improvements proceeding as planned. Skilled construction partners, good weather and the cooperation and support of customers have been major factors in our success so far.

What is the status of the new terminal building?

WAA is currently undertaking a major tender process involving the entire terminal building area, including elevated roadways and improvements to the central utility building as well as the new terminal itself. We anticipate that this process will be concluded early in 2007. Construction of the terminal is scheduled to begin in 2007 and will continue for over two years.

Quick Facts

Airport Site Redevelopment Program at a glance

Specifications

- Airport Terminal Building size: Approximately 51,000 m²
- Parking structure: 4 level parking facility, 1,559 stalls
- Airside construction: additional aircraft parking apron
- Groundside site services

Project schedule:

- 2006 Roadways/Site works
- 2006 Parkade
- 2006-09 Airport Terminal Building Phase I
- 2007-08 Airside
- Future Airport Terminal Building Phase II

Forecast Manitoba-wide economic impact of WAA capital projects

- Person years: 7,301
- Wages: \$311 million
- GDP: \$391 million
- Economic output: \$1.009 billion



Program Team

■ **Program Management Support**
 Parsons
 Wardrop Engineering

■ **Design Groups**
 Pelli Clarke Pelli Architecture
 Stantec Architecture
 Marshall Macklin Monaghan
 Unison-Maximus
 Apple Designs
 Earth Tech Canada

■ **Contractors**
 Man-Shield Construction
 PCL Constructors Canada
 Nelson River Construction
 Mulder Construction
 Man-Shield Construction
 McCain Electric
 Otis Elevators

■ **Financing**
 CIBC World Markets
 RBC Capital Markets
 TD Securities
 Macquarie North America



