



Frequently Asked Questions

Following are answers to questions that have been raised since the last publication of this newsletter.

What construction work has been accomplished so far?

Airport Redevelopment construction was initiated in September 2005 with two immediate goals: 1. Provide staging areas for all future building contractors working on the program over a three-four year period 2. Prepare the site for parkade construction. This has included moving airport security fencing, implementing a variety of road work to accommodate the footprint of the new parkade and relocation of utility infrastructure, which required building of a new permanent surface parking area. Parkade construction began in the fall of 2005 and has proceeded on schedule over the winter and spring of 2006.

Will construction work this summer impact on customers?

It is true that this will be a busy construction period. However, the Airport Redevelopment Program has been designed to minimize the impact of construction activities on customers. Separate construction staging areas have been built as have new surface parking facilities. Temporary traffic lights were installed on Wellington Avenue east of the parkade construction area to control construction and customer traffic in a safe and efficient manner. A system of temporary traffic control signage will be in place throughout the construction period, including guidance from flag staff where required.

There is a great deal of construction right now in Winnipeg. How is this affecting airport redevelopment work?

The amount of building activity occurring at this time, while very positive for the local economy, continues to be of major significance for owners responsible for infrastructure development. It is safe to anticipate that there will be pressure on timelines as well as cost forecasts of major construction projects occurring in the next several years.

Redevelopment Vision

Winnipeg Airports Authority will establish a design that is consistent with our vision of leading transportation innovation and growth on behalf of our community. Unique, striking and outstanding, our Terminal structure will reflect our prairie roots and heritage – an important Canadian transportation centre that will continue to play a leading role in the future of this country.



Strategic Directions

Airport site redevelopment will be implemented based on WAA's corporate Strategic Directions: To enhance customer service and value by providing a new basis for safe, secure and enjoyable travel experiences benefiting all customers; and to deliver and operate excellent facilities and services that will emphasize convenience and satisfaction among all customers.

Comments?

We want to hear from you.

Winnipeg Airports Authority would very much appreciate receiving any comments or suggestions you may have regarding the Airport Site Redevelopment Program. For your convenience, we have provided space on this form which you can fill out and forward to WAA through the mail or by fax. We would also be pleased to hear from you by telephone or e-mail. If you would be interested in receiving future editions of this newsletter, please feel free to include your name, address and telephone number below.

Comments regarding Airport Site Redevelopment

Series of horizontal lines for entering comments.

CONTACT:

Christine Alongi
Winnipeg Airports Authority Inc.
249-2000 Wellington Avenue
Winnipeg, Manitoba R3H 1C2
E-mail: calongi@waa.ca
Phone: 204-987-2021
24 Hour Media Line: 204-992-2791
Fax: 204-987-9401
www.waa.ca

Name: _____
Address: _____
Phone: _____
E-mail: _____



Thank you for your interest and input!

TAKING OFF

SPRING/SUMMER 2006

Message from the President

Moving forward with construction



Barry Rempel with Conservation Minister Stan Struthers

It is very exciting for all of us to see the construction phase of this community's Airport Redevelopment Program now making progress on a daily basis. The building of our modern new parkade facility is well underway and is scheduled to be up and running by the fall of 2006. Progress will also be made on the construction of other major Airport Redevelopment components this year, each with its own role to play in supporting our vision of leading transportation innovation and growth on behalf of the community we serve.

Airport redevelopment creates many important results for this entire region, including economic development, which is perhaps the most tangible benefit. A large workforce has been mobilized already, creating employment opportunities for construction specialists and others working in the building industry. This pool of labour and expertise will continue to grow virtually on a monthly basis over the next three to four years.

Airport Redevelopment is among the largest and most complex infrastructure improvement processes occurring in Manitoba at this time, but it is by no means the only one. In fact, the level of activity occurring in the local construction industry right now is unprecedented in our city's history. This is impacting costs and schedules market-wide and is forecast to intensify over our construction timeline.

Our role at WAA is to anticipate and respond to such immediate challenges in a prudent fashion while continuing to enhance customer services and community growth opportunities. We appreciate the ongoing input of our stakeholders and customers throughout this process and would like to thank our Board of Directors and staff as well for their leadership and support. All are making an important contribution to the future growth and prosperity of our community.

Sincerely,

Barry Rempel

President & CEO

Winnipeg Airports Authority

Inside

Parkade Construction Update	2 – 3
Quick Facts	3
Construction Summer/Fall 2006	4
Frequently Asked Questions	5
We Want to Hear From You	6





AIRPORT SITE REDEVELOPMENT PROGRAM



New Parkade on the Rise



WAA customers will enjoy more comfort and convenience with improved parking infrastructure.

Construction of WAA's modern new parkade facility began in the fall of 2005 and is due for completion during the fall of 2006. The project is on target in terms of timing, with some elements ahead of schedule [e.g. concrete footings] due to a warmer than usual winter season in early 2006.

The footprint of the parkade is approximately two-thirds the size of the new terminal building and requires placement of more than 650 piles. With 1,559 stalls spread over four levels, the parking facility will offer WAA customers a number of service benefits in terms of convenience and comfort. Approximately 75% of parking stalls will be covered. The parkade has close proximity to the new terminal building with good walking access between the facilities. Movement inside the parkade will be quick and efficient through elevators and walkway ramps from deck to deck, which have been universally designed to accommodate wheelchairs and rolling luggage.

Quick Facts

Airport Site Redevelopment Program at a glance.

Specifications:

- Airport Terminal Building size: Approximately 51,000 m²
- Parking structure: 4 level parking facility, 1,559 stalls
- Airside construction: Additional aircraft parking apron
- Groundside site services

Project schedule:

- **2006** Roadways/Site works
- **2006** Parkade
- **2006-09** Airport Terminal Building Phase I
- **2007-08** Airside
- **FUTURE** Airport Terminal Building Phase II

Forecast Manitoba-wide economic impact of WAA capital projects:

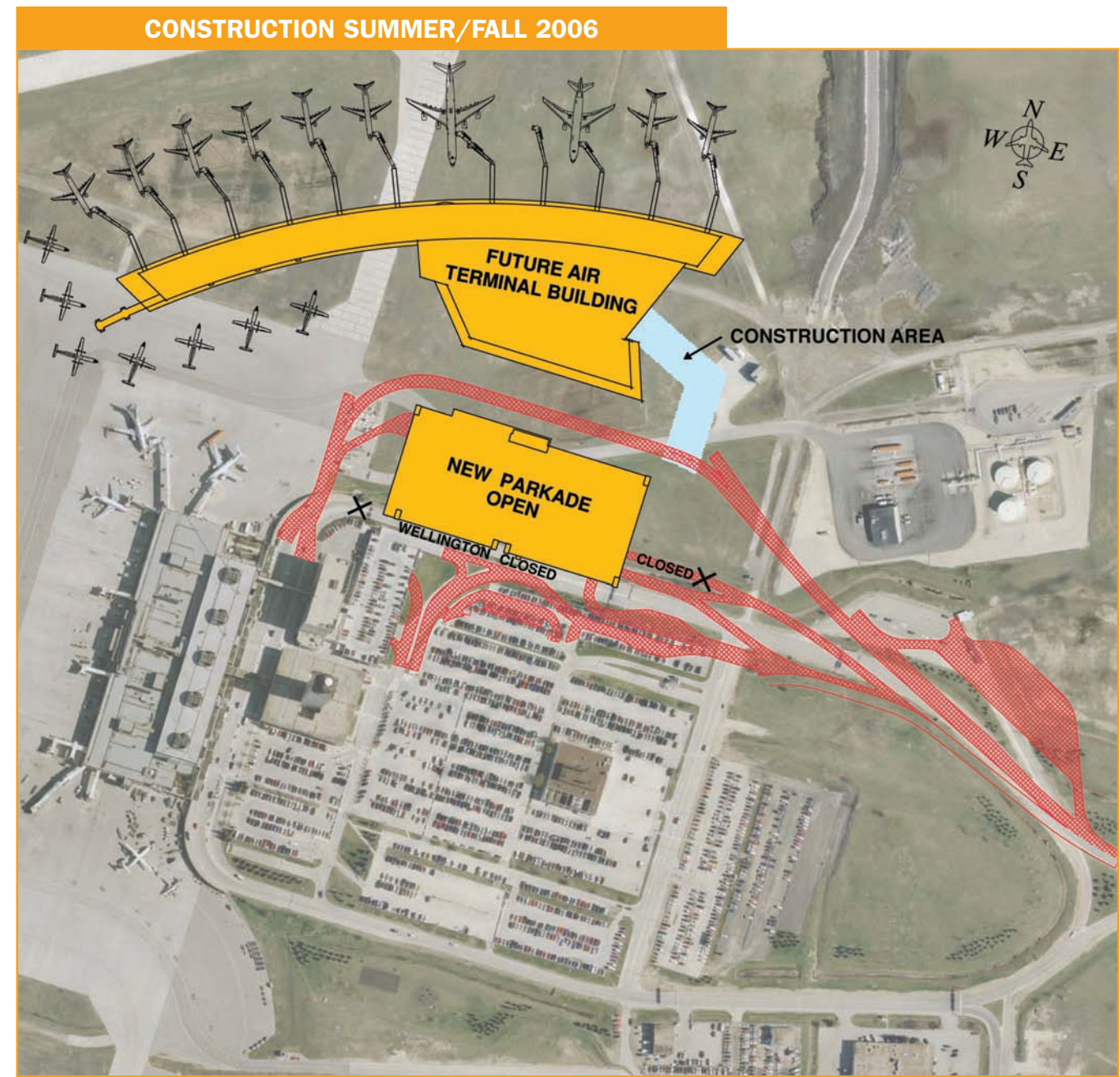
- Person years: 7,301
- Wages: \$311 million
- GDP: \$391 million
- Economic output: \$1.009 billion

The right choice for Manitoba:

Renovation would be more expensive than constructing a new terminal for the long term and would entail an extended period of disruption for all customers.

Program Team:

- **Program Management Support**
Parsons
Wardrop Engineering
- **Design Groups**
Pelli Clarke Pelli Architecture
Stantec Architecture
Marshall Macklin Monaghan
Unison-Maximus
Apple Designs
Earth Tech Canada
- **Contractors**
Man-Shield Construction
PCL Constructors Canada
Nelson River Construction
- **Financing**
CIBC World Markets
RBC Capital Markets
TD Securities
Macquarie North America



- Wellington Avenue relocated summer 2006
- Traffic detours will be designated through temporary directional signage
- Construction updates available at waa.ca



Artists view of the Proposed Terminal

Artists rendering of control tower view shows close proximity of parkade (lower right) to new Terminal building.

